

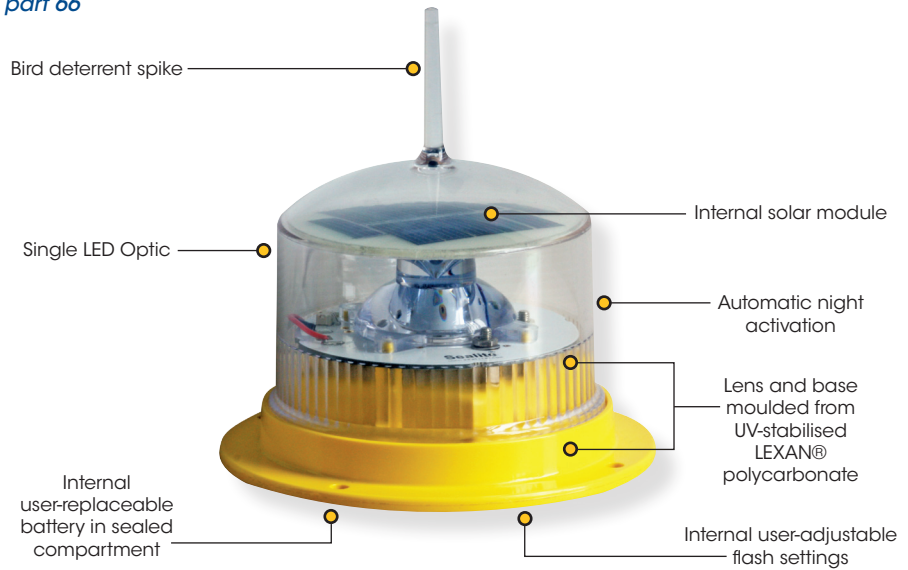
SL15

1-2nm+ Solar Marine Lantern

This equipment complies with requirements of the U.S. Coast Guard in 33 CFR part 66

Next Generation

Single LED Optic ...
Brighter, more efficient



The Sealite Advantage

- User-adjustable flash characters
- User-replaceable battery in sealed battery compartment
- NiMH battery for long service life & wide temperature range
- Completely sealed & self-contained using advanced UV-sealing
- Installs in minutes & operates maintenance-free for up to five years
- IP68 waterproof

The Sealite SL15 1-2nm+ compact LED light is exceptional value and incorporates some of the most advanced technology available. In the tradition of Sealite lanterns, the SL15 is designed to be maintenance-free and have a service life of over 5 years.

The SL15 can be installed in minutes and requires no operator intervention. The SL15 has a rotary switch to allow users to change the flash character of the light without the need for special tools or programmers.

During daylight hours the solar module will charge the battery, and the lantern will automatically begin operation at dusk – once the ambient light threshold drops sufficiently.

The SL15 features Sealite's Single LED Optic which boasts exceptional power to light output efficiency. The tough outer polycarbonate lens incorporates an environment-friendly spike – deterring unwelcome bird life.

The internally housed battery is user-replaceable after years of reliable service.

The unit is sealed using advanced UV-sealing, enabling a rugged and completely waterproof seal capable of prolonged and deep immersion (IP68).

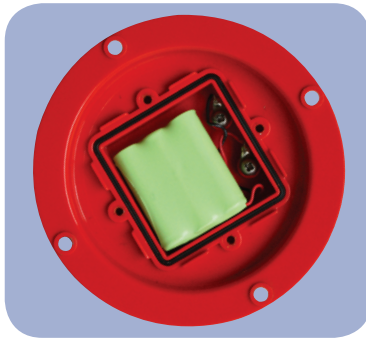
Optional ON/OFF Switch

The SL15 is also available with an optional ON/OFF switch for temporary installations such as worksites.

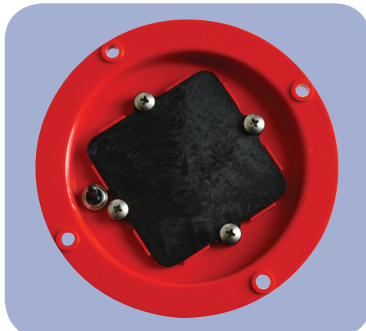


SL15

1-2nm+ Solar Marine Lantern



User-replaceable battery



SL15 with optional ON/OFF switch

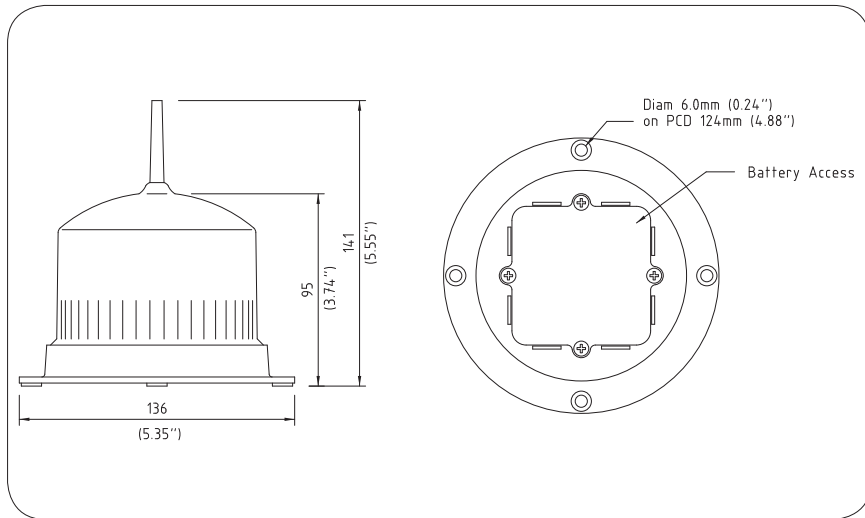


Flash characteristic is selected via internal rotary switch located in the battery compartment

User-Adjustable IALA Flash Characteristics

FLASH SETTING CODE	Flash Sequence (on, off, on...)
0	STEADY LIGHT (intensity reduced)
1	0.5, 1.0
2	0.5, 3.5
3	1.0, 3.0
4	0.5, 5.5
5	0.3, 0.7
6	0.3, 0.7, 0.3, 0.7, 0.3, 0.7, 0.3, 15.7
7	0.3, 1.7
8	0.3, 2.2
9	0.5, 2.0
A	0.3, 2.7
B	0.5, 2.5
C	0.7, 2.3
D	0.5, 4.5
E	1.0, 4.0
F	Custom Setting

Other flash patterns are available on request



SPECIFICATIONS •

Light Characteristics

Light Source

Available Colours

Maximum Available Intensity (cd)†

Visible Range (nm)

Horizontal Output (degrees)

Vertical Divergence (degrees)

Reflector Type

Available Flash Characteristics

Intensity Adjustments

LED Life Expectancy (hours)

Electrical Characteristics

Current Draw (mA)

Circuit Protection

Nominal Voltage (V)

Autonomy (days)

Temperature Range

Solar Characteristics

Solar Module Type

Output (watts)

Solar Module Efficiency (%)

Charging Regulation

Power Supply

Battery Type

Battery Capacity (Ah)

Nominal Voltage (V)

Battery Service Life

Physical Characteristics

Body Material

Lens Material

Lens Diameter (mm/inches)

Lens Design

Mounting

Height (mm/inches)

Width (mm/inches)

Mass (kg/lbs)

Product Life Expectancy

Certifications

CE

Quality Assurance

Waterproof

Intellectual Property

Patents

Trademarks

Warranty *

Options Available

1 LED

Red, Green, White, Yellow, Blue

Red - 6.2 Green - 7.6 White - 6.8 Yellow - 5.9

1-2+

360

7

Single LED Optic

16 user-adjustable IALA flash characteristics (other flash patterns available on request)

32 automatic step-down settings based on power demand of flash code selection

>100,000

Refer to Sealite Power Calculator

Integrated

3.6

>50 (14 hour darkness, 12.5% duty cycle)

-40 to 80°C

Multicrystalline

0.45

14

Microprocessor controlled

High grade NiMH - Environmentally friendly

1.6

3.6

Average 5 years

LEXAN® Polycarbonate - UV-stabilised

LEXAN® Polycarbonate - UV-stabilised

98 / 3⁷/₈

Single LED Optic

4 x 6mm mounting holes

141 / 5¹/₂

136 / 5³/₈

0.5 / 1¹/₈

Up to 12 years

EN61000-6-3:1997. EN61000-6-1:1997

ISO9001:2008

IP68

US Pat. No. 6,667,582. AU Pat. No. 778,918

SEALITE® is a registered trademark of Sealite Pty Ltd

3 years

- ON/OFF switch
- Custom flash patterns
- 50mm pole mount adapter plate



• Specifications subject to change or variation without notice

* Subject to standard terms and conditions

† Intensity setting subject to solar availability



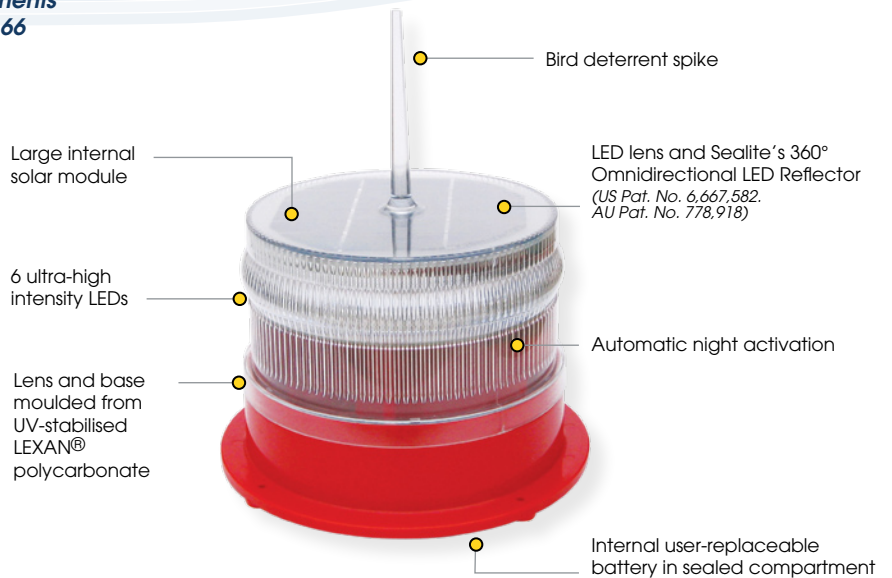
SL60

2-3nm+ Solar Marine Light

This equipment complies with requirements of the U.S. Coast Guard in 33 CFR part 66



Shown with optional 200mm OD base pattern (SL60-LB)



The Sealite Advantage

- 256 IALA flash patterns, user-adjustable without the need for external devices
- User-replaceable battery in sealed battery compartment
- NiMH battery for long service life & wide temperature range
- 4 user-adjustable intensity settings
- ON/OFF storage switch
- IP68 waterproof

The Sealite SL60 is the world's most popular and versatile 2-3nm+ solar marine light.

Made from tough, durable polycarbonate and using the latest high intensity LED's, no expense has been spared in the design and development of this lantern.

The SL60 can be installed in minutes, and requires no operator intervention. The flash-characters are easily adjusted on-site by the user, and the lantern has a permanent ON/OFF switch for easy storage.

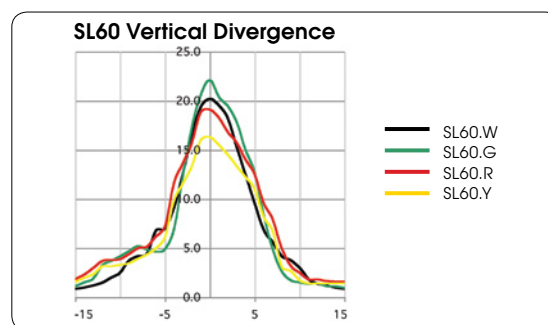
During daylight hours the solar module will charge the battery, and the lantern will automatically begin operation at dusk - once the ambient light threshold drops sufficiently.

The sealed battery compartment allows the battery to be replaced after years of service - don't throw the light away at the end of the battery service life.

The unit is sealed using polycarbonate bonding compounds similar to those used by major automobile manufacturing companies.

Optional 200mm OD Base Pattern (SL60-LB)

The SL60 is available with optional large 200mm OD base pattern to suit installation requirements.



Candela (cd)	
SL60	
R	19.1
G	22.1
W	20.2
Y	16.3



Head Office:
Sealite Pty Ltd
AUSTRALIA

Ph. +61 (0)3 5977 6128
Fax. +61 (0)3 5977 6124
Internet: www.sealite.com.au
Email: info@sealite.com.au

Sealite USA
USA (Gilford, NH)
Ph. (603) 524-6066

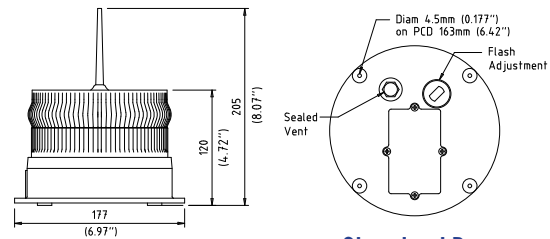
Fax. (603) 524-8100
Internet: www.sealiteusa.com
Email: info@sealiteusa.com

SL60

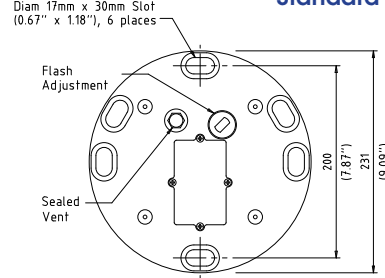
2-3nm+ Solar Marine Light



User replaceable battery

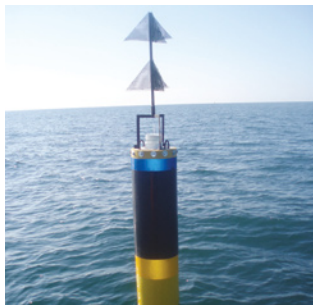


Standard Base



Optional 200mm OD Base

SPECIFICATIONS •



Sochi, Russia



Barcelona, Spain



SL60 lanterns are installed throughout Cambodia & Vietnam with partner Khmer Solar

Light Characteristics

Light Source
Available Colours
Maximum Available Intensity (cd)^Δ
Visible Range (nm)
Horizontal Output (degrees)
Vertical Divergence (degrees)
Reflector Type
Available Flash Characteristics
Intensity Adjustments
LED Life Expectancy (hours)

6 ultra-high intensity LEDs
Red, Green, White, Yellow, Blue
Red - 19.1 Green - 22.1 White - 20.2 Yellow - 16.3
2-3+
360
9
Omnidirectional 360° LED Reflector (US Pat. No. 6,667,582. AU Pat. No. 778,918)
Up to 256 IALA recommended (user adjustable)
Adjustable in 25% increments
>100,000

Electrical Characteristics

Current Draw (mA)
Circuit Protection
Nominal Voltage (v)
Autonomy (days)
Temperature Range

Refer to Sealite Power Calculator
Integrated
3.6
>20 (14 hour darkness, 12.5% duty cycle)
-40 to 80°C

Solar Characteristics

Solar Module Type
Output (watts)
Solar Module Efficiency (%)
Charging Regulation

Multicrystalline
1.4
14
Microprocessor controlled

Power Supply

Battery Type
Battery Capacity (Ah)
Nominal Voltage (v)
Battery Service Life

High grade NiMH - Environment friendly
4
3.6
Average 5 years

Physical Characteristics

Body Material
Lens Material
Lens Diameter (mm/inches)
Lens Design
Mounting
Height (mm/inches)
Width (mm/inches)
Mass (kg/lbs)
Product Life Expectancy

LEXAN® Polycarbonate - UV-stabilised
LEXAN® Polycarbonate - UV-stabilised
150 / 5^{7/8}
External optics with interior flute design
4 x 4.5mm mounting holes
205 / 8^{1/8}
177 / 7
0.9 / 2^{1/8} (SL60-LB 1 / 2^{1/4}, SL60/8Ah 1 / 2^{1/4}, SL60-LB/8Ah 1.1 / 2^{1/2}, SL60-LB/16Ah 1.5 / 3^{1/5})
Up to 12 years

Certifications

CE
Quality Assurance
Waterproof

EN61000-6-3:1997. EN61000-6-1:1997
ISO9001:2000
IP68

Intellectual Property

Patents
Trademarks

US Pat. No. 6,667,582. AU Pat. No. 778,918
SEALITE® is a registered trademark of Sealite Pty Ltd

Warranty*

Full 3 years

Options Available

- 8Ah battery (SL60/8Ah or SL60-LB/8Ah). 16Ah battery (SL60-LB/16Ah)
- 200mm OD base (SL60-LB)
- 50mm pole mount adaptor plate (SL60 - MC/02. SL60-LB - MC/03)

• Specifications subject to change or variation without notice

* Subject to standard terms and conditions

Δ Intensity setting subject to solar availability



Head Office:
Sealite Pty Ltd
AUSTRALIA

Ph. +61 (0)3 5977 6128
Fax. +61 (0)3 5977 6124
Internet: www.sealite.com.au
Email: info@sealite.com.au

Sealite USA
USA (Gilford, NH)
Ph. (603) 524-6066

Fax. (603) 524-8100
Internet: www.sealiteusa.com
Email: info@sealiteusa.com

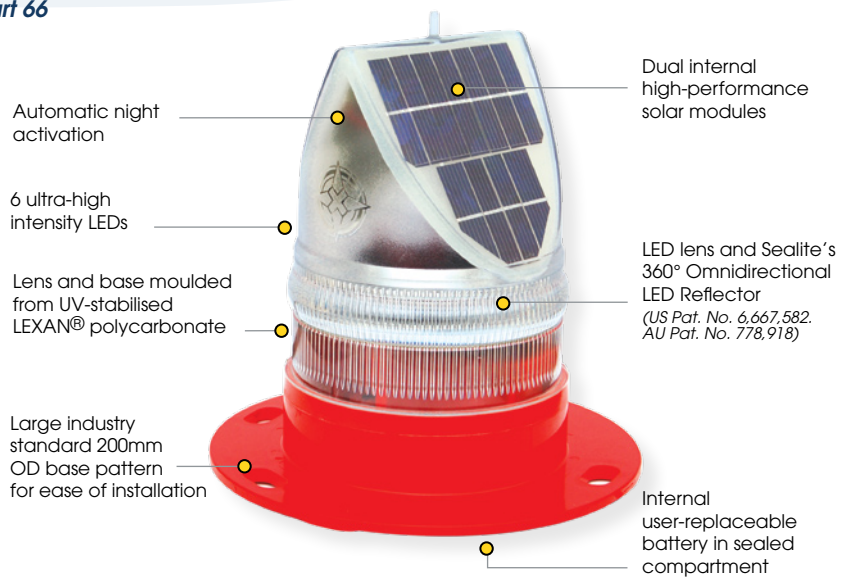
SL70

2-3nm+ Solar Marine Light

This equipment complies with requirements of the U.S. Coast Guard in 33 CFR part 66



Available with RF comm-sync or radio control



The Sealite SL70 is exceptional in it's unique ability to be able to 'track the sun' and operate reliably in low sunlight conditions. The SL70 has been proven to operate as a 2-3+ mile compact buoy lantern in various low-sunlight environments such as Britain, Canada, and Europe.

Made from tough, durable polycarbonate and using the latest high intensity LED's, the SL70 lantern boasts dual high-performance solar modules incorporated into Sealite's world-first Solar Collection Lens. These solar modules are angled to obtain maximum sunlight capture, allowing the unit to operate reliably in a range of low sunlight environments.

The SL70 can be installed in minutes, and requires no operator intervention. The flash-characters are easily adjusted on-site by the user, and the lantern has a permanent ON/OFF switch for easy storage.

The sealed battery compartment allows the battery to be replaced after years of service - don't throw the light away at the end of the battery service life.

Sealite's SL70 solar marine light has been awarded the prestigious Australian DesignMark® at the Australian Design Awards; a testament of Sealite's commitment to the ongoing development of state-of-the-art products.

Optional RF Communication Synchronisation (SL70-CS)

The SL70 is available with optional short-range RF communication synchronisation. Two (2) or more lights can be synchronised to flash in unison via an internal RF module - ideal for rivers, marina entrances, channel marking and aquaculture.

When lanterns flash in synchronisation they can be clearly distinguished from other nav aids and confusing background lighting - ideal for rivers, marina entrances, channel marking and aquaculture.

Optional Remote Radio Control (SL70-RC)

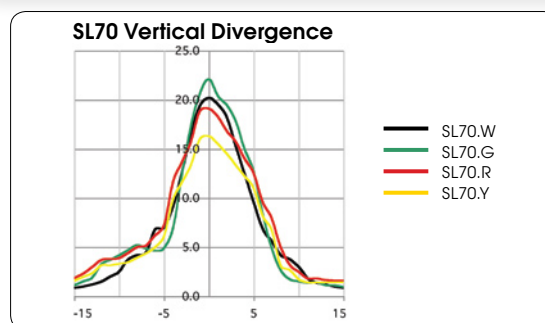
Radio control may be fitted to the SL70 model enabling users to remotely modify the setup of their lantern via handheld radio controller (SL-RC-2.4).

Optional 12 LED Light Configuration (SL70-12)

In high sunlight regions the SL70 may be fitted with 12 LED's and appropriate intensity settings to provide a range of >3 nautical miles (colour dependant).

The Sealite Advantage

- Reliable year-round operation in low sunlight conditions
- 256 IALA flash patterns, user-adjustable without the need for external devices
- User-replaceable battery in sealed battery compartment
- NiMH battery for long service life & wide temperature range
- 4 user-adjustable intensity settings
- ON/OFF storage switch
- IP68 waterproof



Candela (cd)	
SL70	
R	19.1
G	22.1
W	20.2
Y	16.3



Head Office:
Sealite Pty Ltd
AUSTRALIA

Ph. +61 (0)3 5977 6128
Fax. +61 (0)3 5977 6124
Internet: www.sealite.com.au
Email: info@sealite.com.au

Sealite USA
USA (Gilford, NH)
Ph. (603) 524-6066

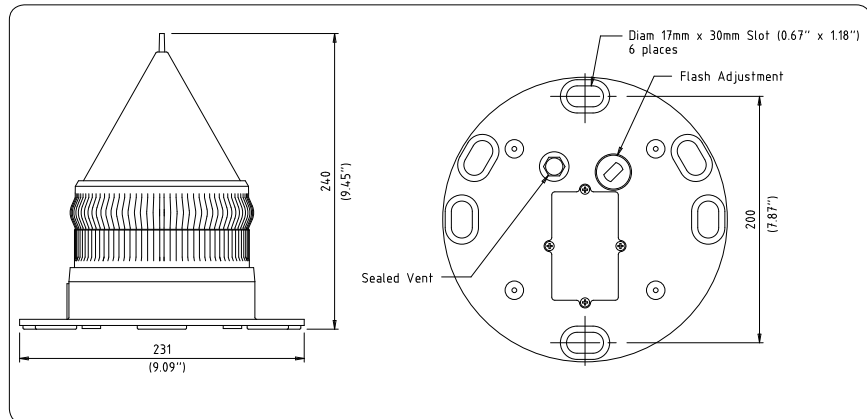
Fax. (603) 524-8100
Internet: www.sealiteusa.com
Email: info@sealiteusa.com

SL70

2-3nm+ Solar Marine Light



User replaceable battery



SPECIFICATIONS •



Castellon, Spain



Western Australia installations



Light Characteristics

Light Source
Available Colours
Maximum Available Intensity (cd)^Δ
Visible Range (nm)
Horizontal Output (degrees)
Vertical Divergence (degrees)
Reflector Type

Available Flash Characteristics
Intensity Adjustments
LED Life Expectancy (hours)

Electrical Characteristics

Current Draw (mA)
Circuit Protection
Nominal Voltage (v)
Autonomy (days)
Temperature Range

Solar Characteristics

Solar Module Type
Output (watts)
Solar Module Efficiency (%)
Charging Regulation

Power Supply

Battery Type
Battery Capacity (Ah)
Nominal Voltage (v)
Battery Service Life

Physical Characteristics

Body Material
Lens Material
Lens Diameter (mm/inches)
Lens Design
Mounting
Height (mm/inches)
Width (mm/inches)
Mass (kg/lbs)
Product Life Expectancy

Certifications

CE
Quality Assurance
Waterproof

Intellectual Property

Patents
Trademarks

Warranty*

Options Available

6 ultra-high intensity LEDs
Red, Green, White, Yellow, Blue
Red - 19.1 Green - 22.1 White - 20.2 Yellow - 16.3
2-3+
360
9
Omnidirectional 360° LED Reflector (US Pat. No. 6,667,582.
AU Pat. No. 778,918)
Up to 256 IALA recommended (user adjustable)
Adjustable in 25% increments
>100,000

Refer to Sealite Power Calculator

Integrated
3.6
30 (14 hour darkness, 12.5% duty cycle)
-40 to 80°C

Multicrystalline
2.5 (2 x 1.25watt)
14
Microprocessor controlled

High grade NiMH - Environment friendly
8
3.6
Average 5 years

LEXAN® Polycarbonate - UV-stabilised
LEXAN® Polycarbonate - UV-stabilised
150 / 5⁷/₈
External optics with interior flute design
200mm OD base pattern
240 / 9¹/₂
231 / 9¹/₈
1.4 / 3¹/₈ (SL70/16Ah 1.6 / 3¹/₂)
Up to 12 years

EN61000-6-3:1997. EN61000-6-1:1997
ISO9001:2000
IP68

US Pat. No. 6,667,582. AU Pat. No. 778,918
SEALITE® is a registered trademark of Sealite Pty Ltd

Full 3 years

- 16Ah battery (SL70/16Ah)
- 12 LEDs (SL70-12)
- 50mm pole mount adaptor plate (MC/03)
- RF communication synchronisation (SL70-CS)
- Remote radio control (SL70-RC) with handheld radio controller (SL-RC-2.4)

CE

• Specifications subject to change or variation without notice

* Subject to standard terms and conditions

Δ Intensity setting subject to solar availability



Head Office:
Sealite Pty Ltd
AUSTRALIA

Ph. +61 (0)3 5977 6128
Fax. +61 (0)3 5977 6124
Internet: www.sealite.com.au
Email: info@sealite.com.au

Sealite USA
USA (Gilford, NH)
Ph. (603) 524-6066

Fax. (603) 524-8100
Internet: www.sealiteusa.com
Email: info@sealiteusa.com

SLC310

Compact 3-5nm+ Solar Marine Lantern

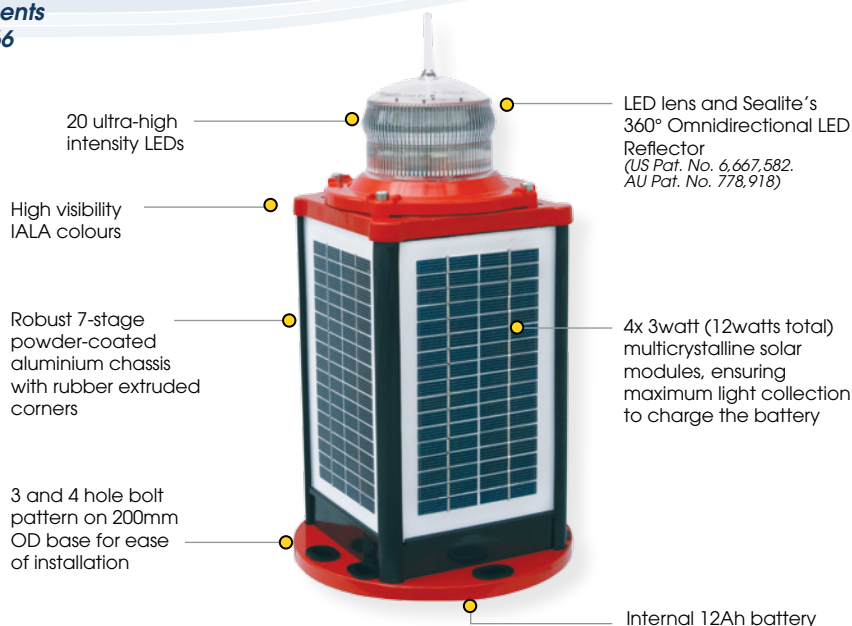
This equipment complies with requirements of the U.S. Coast Guard in 33 CFR part 66



Now with 3 & 4 hole bolt pattern, & PC interface



Available with internal GPS synchronisation



The SLC310 is a robust, completely self-contained 3-5nm+ Solar LED Lantern specifically designed to withstand the tough marine environment, providing years of reliable, low-maintenance service. The 3 & 4 hole bolt pattern base fits directly onto existing 200mm OD industry standard mounts for ease of installation.

The chassis of the SLC310 is made from cast aluminium, subject to 7-stage powder-coating in high visibility IALA colours for daytime recognition, with UV-stabilised rubber corners and gaskets providing a superior IP68 waterproof rating - the best in the industry.

Four (4) premium-grade solar modules are integrated into the assembly, and mounted to collect sunlight at all angles.

The unit is capable of producing any of 256 IALA recommended flash characters - field-adjustable without the need for ancillary equipment.

The tough polycarbonate lens is specifically designed for use with LEDs, and incorporates an environment-friendly spike - deterring unwelcome bird life. The lens design also ensures that vessel operators clearly see the light from above, when passing the AtoN.

Optional PC Interface (SLC310-PC)

Sealite's new PC interface allows a host of features to be loaded onto the lantern, including automatic effective intensity calculations, adjustable on/off LUX levels and custom flash codes.

Users can choose between Schmidt-Clausen, Allard, Blondel-Rey-Douglas, and Allard-Ohno-Couzin (100 pulse) effective intensity settings.

Optional High Intensity Model (SLC310-HI)

The SLC310 is available in 2 peak intensity modes where solar radiation permits.

For solar sizing please refer to the Sealite Power Calculator.

Optional GPS Synchronisation (SLC310-GPS & SLC310-HI-GPS)

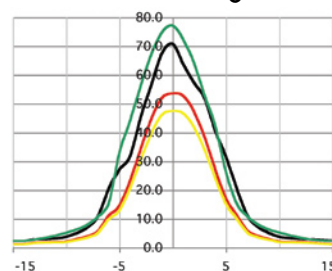
Sealite's SLC310 is also available with optional GPS synchronisation enabling users to clearly mark channels, ports, rivers and entrances, marinas, aquaculture installations and exclusion zones with independent lanterns which flash in synchronisation.

When lanterns flash in synchronisation, they can be clearly distinguished from other nav aids and confusing background lighting.

The Sealite Advantage

- **Simplicity of design ensures ease of maintenance in the field**
- **Heavy-duty aluminium construction**
- **All components user-replaceable in the unlikely event of damage**
- **200mm OD base pattern for immediate installation on existing structures**
- **User-replaceable battery**
- **256 IALA flash patterns**
- **Tempered glass solar modules for peak efficiency**
- **IP68 waterproof**
- **Full 3 year warranty**

SLC310 Vertical Divergence



	Candela (cd)	
	SLC310	SLC310-HI
R	53.6	94
G	77.2	125
W	70.8	116
Y	47.5	83



Head Office:
Sealite Pty Ltd
AUSTRALIA

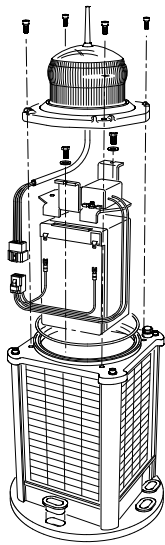
Ph. +61 (0)3 5977 6128
Fax. +61 (0)3 5977 6124
Internet: www.sealite.com.au
Email: info@sealite.com.au

Sealite USA
USA (Gilford, NH)
Ph. (603) 524-6066

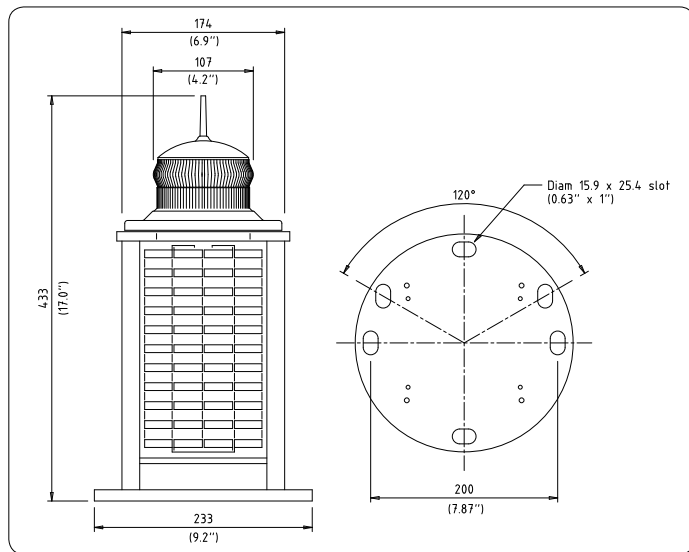
Fax. (603) 524-8100
Internet: www.sealiteusa.com
Email: info@sealiteusa.com

SLC310

Compact 3-5nm+ Solar Marine Lantern



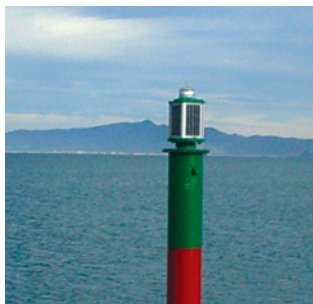
Convenient user-replaceable battery



SPECIFICATIONS •



Barcelona, Spain



Dodanduwa Harbour, Sri Lanka

Light Characteristics

Light Source
Available Colours
Maximum Available Intensity (cd)^Δ
Visible Range (nm)
Horizontal Output (degrees)
Vertical Divergence (degrees)
Reflector Type

Available Flash Characteristics
Intensity Adjustments
LED Life Expectancy (hours)

Electrical Characteristics

Current Draw (mA)
Circuit Protection
Nominal Voltage (V)
Autonomy (days)
Temperature Range

Solar Characteristics

Solar Module Type
Output (watts)
Solar Module Efficiency (%)
Charging Regulation

Power Supply

Battery Type
Battery Capacity (Ah)
Nominal Voltage (V)
Battery Service Life

Physical Characteristics

Body Material

Lens Material
Lens Diameter (mm/inches)
Lens Design
Mounting
Height (mm/inches)
Width (mm/inches)
Mass (kg/lbs)
Product Life Expectancy

Certifications

CE
Quality Assurance
Waterproof

Intellectual Property

Patents
Trademarks

Warranty*

Options Available

20 ultra-high intensity LEDs
Red, Green, White, Yellow, Blue
Red - 53.6 Green - 77.2 White - 70.8 Yellow - 47.5
3-5+
360
9
Omnidirectional 360° LED Reflector (US Pat. No. 6,667,582.
AU Pat. No. 778,918)
Up to 256 IALA recommended (user adjustable)
Adjustable in 25% increments
>100,000

Refer to Sealite Power Calculator
Integrated
12
>55 (14 hour darkness, 12.5% duty cycle)
-40 to 80°C

Multicrystalline
12 (4 x 3watt)
14
Microprocessor controlled

SLA (Sealed Lead Acid)
12
12
Average 5 years

7-stage powder-coated aluminium chassis with UV-stabilised
rubber corners & gaskets
LEXAN® Polycarbonate - UV-stabilised
107 / 4^{1/4}
External optics with interior flute design
3 & 4 hole bolt pattern on 200mm OD base
433 / 17
233 / 9^{1/5}
9.4 / 20^{3/4}
Up to 12 years

EN61000-6-3:1997. EN61000-6-1:1997
ISO9001:2000
IP68

US Pat. No. 6,667,582. AU Pat. No. 778,918
SEALITE® is a registered trademark of Sealite Pty Ltd

Full 3 years

- High Intensity Model (SLC310-HI)
- GPS Synchronisation (SLC310-GPS & SLC310-HI-GPS)
- 50mm pole mount adaptor plate (MC/03)

CE

• Specifications subject to change or variation without notice

* Subject to standard terms and conditions

Δ Intensity setting subject to solar availability



Head Office:
Sealite Pty Ltd
AUSTRALIA

Ph. +61 (0)3 5977 6128
Fax. +61 (0)3 5977 6124
Internet: www.sealite.com.au
Email: info@sealite.com.au

Sealite USA
USA (Gilford, NH)
Ph. (603) 524-6066

Fax. (603) 524-8100
Internet: www.sealiteusa.com
Email: info@sealiteusa.com

SLC400

Compact 4-6nm+ Solar Marine Lantern

This equipment complies with requirements of the U.S. Coast Guard in 33 CFR part 66

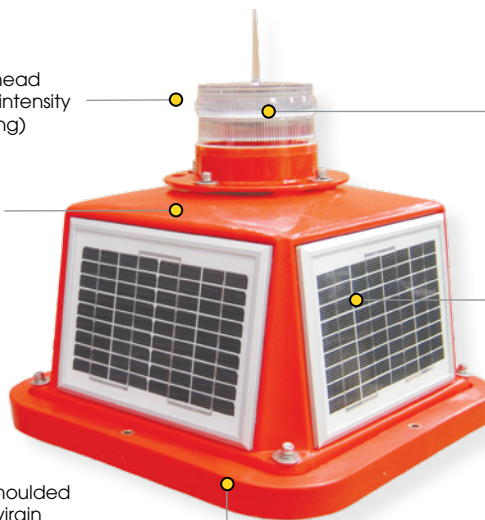


Available with GPS sync, RF comm-sync, radio control or GSM control

SL125-1 light-head (36 ultra-high intensity LEDs. IP68 rating)

High visibility IALA colours

Rotationally-moulded UV-stabilised virgin polyethylene body



LED lens and Sealite's 360° Omnidirectional LED Reflector (US Pat. No. 6,667,582. AU Pat. No. 778,918)

4x 5watt (20watts total) multicrystalline solar modules, ensuring maximum light collection to charge the battery

Internal 26Ah battery

The Sealite Advantage

- Complete unit - ready for immediate installation
- Impact & weather resistant polyethylene
- 256 IALA flash patterns, user-adjustable without the need for external devices
- Tempered glass solar modules for peak efficiency
- Vertical light emissions to maintain visibility when passing adjacent to light

The SLC400 is a completely self-contained 4-6nm+ Solar LED Marine Lantern designed for a range of low-maintenance applications.

The light boasts a large internal waterproof battery compartment, a 36 LED flasher unit, and 4 premium-grade 5watt solar modules mounted to collect sunlight at all angles.

The SLC400 is moulded from UV-stabilised virgin polyethylene, providing enormous impact and weather resistance, in addition to high visibility IALA colours.

The tough polycarbonate lens is specifically designed for use with LEDs, and incorporates an environment-friendly spike - deterring unwelcome bird life. The lens design also ensures that vessel operators clearly see the light from above, when passing the AtoN.

The user-friendly 2-piece design allows the lantern to be opened for convenient battery inspection or replacement whilst the base remains fixed to the supporting structure.

Optional Flash Synchronisation via RF Comm Sync (SLC400-CS) or GPS (SLC400-GPS)

The SLC400 may be fitted with optional comm sync RF module for short range flash synchronisation (SLC400-CS). For flash synchronisation of lanterns installed over longer ranges, a GPS module may be fitted (SLC400-GPS).

When lanterns flash in synchronisation they can be clearly distinguished from other nav aids and confusing background lighting - ideal for rivers, marina entrances, channel marking and aquaculture.

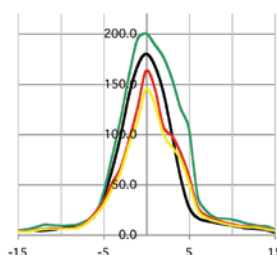
Optional GSM Remote Monitoring & Control (SLC400-GSM)

The SLC400 may also be fitted with GSM remote monitoring and control capabilities - enabling users to access real-time diagnostics data and change lantern settings via cell-phone or PC interface.

Optional Remote Radio Control (SLC400-RC)

Radio control may be fitted to the SLC400 model enabling users to remotely modify the setup of their lantern via handheld radio controller (SL-RC-2.4).

SLC400 Vertical Divergence



— SLC400.W
— SLC400.G
— SLC400.R
— SLC400.Y

Candela (cd)

SLC400	
R	163
G	200
W	180
Y	145



Head Office:
Sealite Pty Ltd
AUSTRALIA

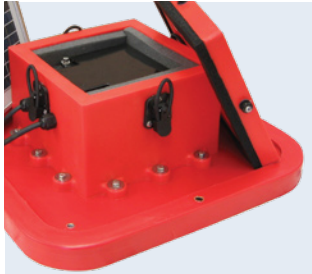
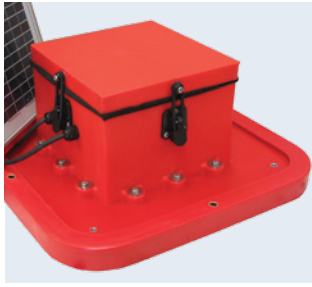
Ph. +61 (0)3 5977 6128
Fax. +61 (0)3 5977 6124
Internet: www.sealite.com.au
Email: info@sealite.com.au

Sealite USA
USA (Gilford, NH)
Ph. (603) 524-6066

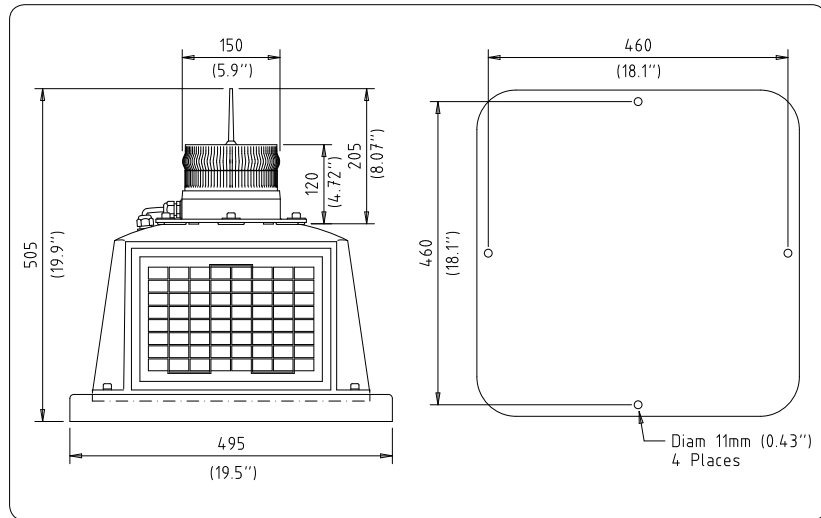
Fax. (603) 524-8100
Internet: www.sealiteusa.com
Email: info@sealiteusa.com

SLC400

Compact 4-6nm+ Solar Marine Lantern



Convenient battery replacement



SPECIFICATIONS •



SLC400 installed in Denmark



Hard-wire synchronised SLC400 lanterns, Monsanto, Belgium

Light Characteristics

Light Source
Available Colours
Maximum Available Intensity (cd)^Δ
Visible Range (nm)
Horizontal Output (degrees)
Vertical Divergence (degrees)
Reflector Type

Available Flash Characteristics
Intensity Adjustments
LED Life Expectancy (hours)

Electrical Characteristics

Current Draw (mA)
Circuit Protection
Nominal Voltage (V)
Autonomy (days)
Temperature Range

Solar Characteristics

Solar Module Type
Output (watts)
Solar Module Efficiency (%)
Charging Regulation

Power Supply

Battery Type
Battery Capacity (Ah)
Nominal Voltage (V)
Battery Service Life

Physical Characteristics

Body Material
Lens Material
Lens Diameter (mm/inches)
Lens Design
Mounting
Height (mm/inches)
Width (mm/inches)
Mass (kg/lbs)
Product Life Expectancy

Certifications

CE
Quality Assurance
Waterproof

Intellectual Property

Patents
Trademarks

Warranty*

Options Available

SL125-1 (36 LED lantern as standard)
Red, Green, White, Yellow, Blue
Red - 163 Green - 200 White - 180 Yellow - 145
4-6+
360
9
Omnidirectional 360° LED Reflector (US Pat. No. 6,667,582.
AU Pat. No. 778,918)
Up to 256 IALA recommended (user adjustable)
Adjustable in 25% increments
>100,000

Refer to Sealite Power Calculator
Integrated
12
>30 (14 hour darkness, 12.5% duty cycle)
-40 to 80°C

Multicrystalline
20 (4 x 5watt)
14
Microprocessor controlled

SLA (Sealed Lead Acid)
26
12
Average 5 years

Rotationally-moulded UV-stabilised virgin polyethylene
LEXAN® Polycarbonate – UV-stabilised
150 / 5⁷/₈
External optics with interior flute design
4 x 11mm mounting holes
505 / 19⁷/₈
495 / 19¹/₂
24 / 52⁷/₈
Up to 12 years

EN61000-6-3:1997. EN61000-6-1:1997
ISO9001:2000
IP68 light-head

US Pat. No. 6,667,582. AU Pat. No. 778,918
SEALITE® is a registered trademark of Sealite Pty Ltd

Full 3 years

- 200mm OD mounting plate (MC/06)
- GPS (SLC400-GPS) or RF communication (SLC400-CS) synchronisation
- GSM (SLC400-GSM) or RF Radio (SLC400-RC) monitoring & control capabilities
- Note - remote monitoring will reduce visible range of lantern due to increased power consumption
- 10 degree lens



• Specifications subject to change or variation without notice

* Subject to standard terms and conditions

Δ Intensity setting subject to solar availability



Head Office:
Sealite Pty Ltd
AUSTRALIA

Ph. +61 (0)3 5977 6128
Fax. +61 (0)3 5977 6124
Internet: www.sealite.com.au
Email: info@sealite.com.au

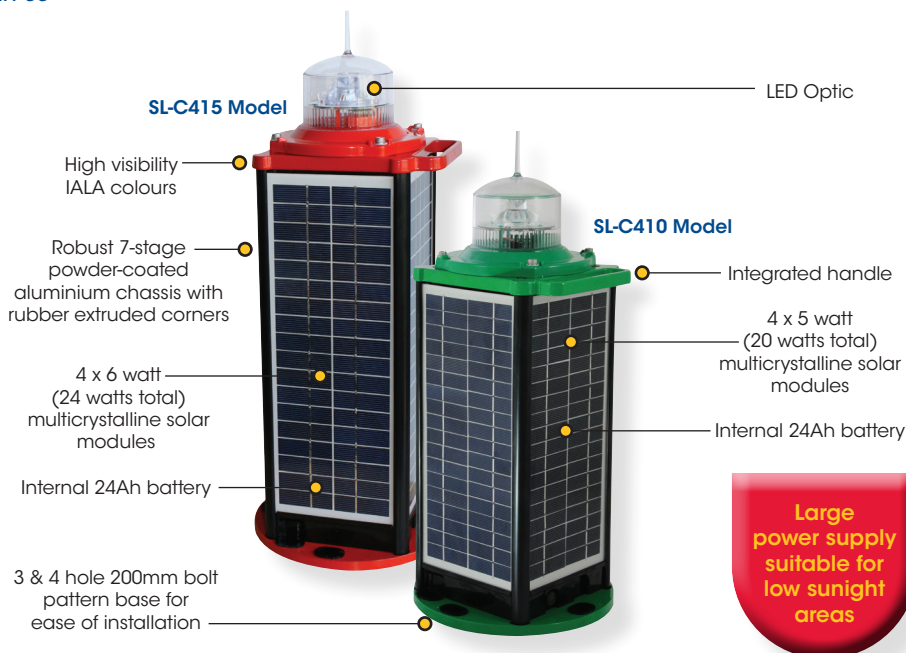
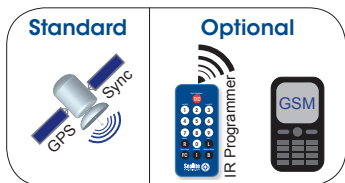
Sealite USA
USA (Gilford, NH)
Ph. (603) 524-6066

Fax. (603) 524-8100
Internet: www.sealiteusa.com
Email: info@sealiteusa.com

3-5NM+ Solar Marine Lantern

SL-C410 / SL-C415

This equipment complies with requirements of the U.S. Coast Guard in 33 CFR part 66



Large power supply suitable for low sunlight areas

The Sealite Advantage

- IR programmable
- Fitted with on-board GPS as standard for synchronised flashing
- Simplicity of design ensures ease of maintenance in the field
- Heavy-duty aluminium construction
- All components user-replaceable in the unlikely event of damage
- 200mm bolt pattern for immediate installation on existing structures
- User-replaceable battery

The SL-C410 and SL-C415 are robust, completely self-contained 3-5NM+ Solar LED Lanterns specifically designed to withstand the tough marine environment, providing years of reliable, low-maintenance service. The 3 & 4 hole bolt pattern base fits directly onto existing 200mm bolt pattern industry standard mounts for ease of installation.

The four (4) premium-grade solar modules are integrated into the assembly, and mounted to collect sunlight at all angles. The SL-C410 has a large power supply consisting of four 5 watt panels (20 watt total) and the SL-C415 has four 6 watt panels (24 watt total) making these model perfect for use in lower sunlight areas or where more demanding duty cycles are required.

The base and top of the lanterns are made from cast aluminium, subject to 7-stage powder-coating in high visibility IALA colours for daytime recognition, with UV-stabilised rubber corners and gaskets providing a superior IP68 waterproof rating – the best in the industry. A handle is incorporated into the chassis for safe lifting.

The tough, polycarbonate lens is specifically designed for use with LEDs and incorporates an environment-friendly spike – deterring unwelcome bird life. The lens design also ensures that vessel operators clearly see the light from above when passing the AtoN.

The SL-C410 and SL-C415 come with standard rotary switches for convenient in-field changes of flash characters and intensity selection. In addition, the unit may be provided with an IR programmer for added functionality. Programmable features include; flash code adjustment, battery diagnostics and lux adjustment.

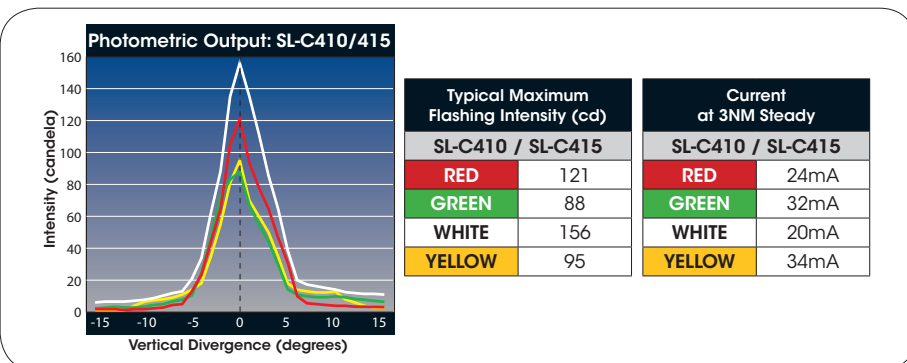
GPS Synchronisation as Standard

Sealite has utilised the latest advancements in GPS technology to develop an internal synchronisation system that is incorporated into the SL-C410 and SL-C415 lanterns. Using overhead satellites, lights set to the same flash pattern will flash in unison.

When lanterns flash in synchronisation they can be clearly distinguished from other nav aids and confusing background lighting – ideal for rivers, marina entrances, channel marking and aquaculture.

High Intensity Mode

For high sunlight regions or low duty-cycle applications, the model may be user-set to operate in high-intensity mode by the IR programmer.



3-5NM+ Solar Marine Lantern

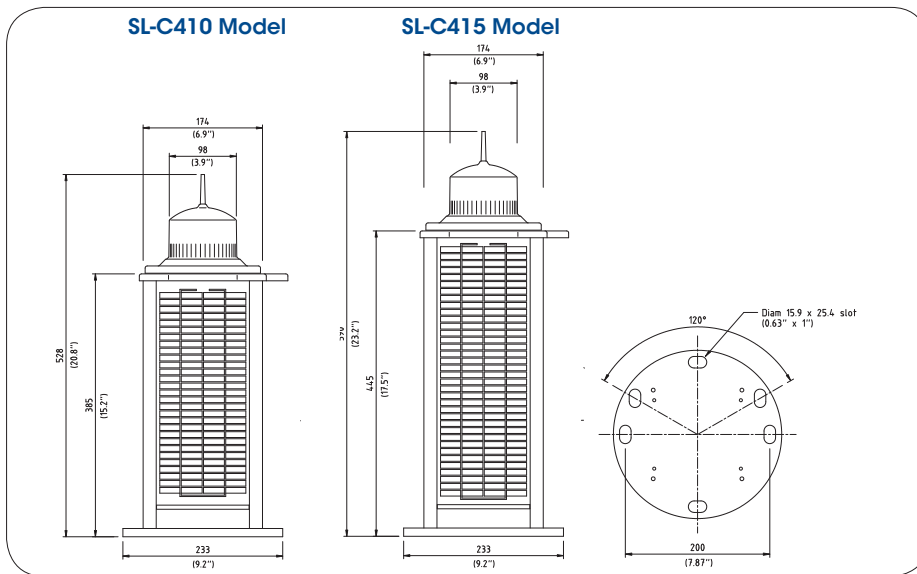
SL-C410 / SL-C415

Optional GSM Monitoring & Control System

The SL-C410 and SL-C415 may also be fitted with GSM Cell-Phone Monitoring and Control - enabling users to access real-time diagnostics data and change lantern settings via a cell-phone. The system can also be configured to send out alarm SMS text messages to designated cellular telephone numbers. Users can also have alarms and reports sent to designated email addresses.



SL-C410 model shown with optional GSM Module



SPECIFICATIONS * *

SL-C410

SL-C415

Light Characteristics

Light Source
Available Colours
Typical Maximum Flashing Intensity (cd)†
Visible Range (NM)

LED
Red, Green, White, Yellow, Blue
Red - 121 Green - 88 White - 156 Yellow - 95

Horizontal Output (degrees)
Vertical Divergence (degrees)
Available Flash Characteristics
Intensity Adjustments
LED Life Expectancy (hours)

AT @ 0.74: 3-5+
AT @ 0.85: 3.5-6.3+
360
>7
Up to 256 IALA recommended (user adjustable)
Multiple intensity settings
>100,000

Electrical Characteristics

Current Draw (mA)
Circuit Protection
Nominal Voltage (V)
Autonomy (nights)
Temperature Range

Refer to Sealite Power Calculator
Integrated
12
>110 (14 hour darkness, 12.5% duty cycle)
-40 to 80°C

Solar Characteristics

Solar Module Type
Output (watts)
Charging Regulation

Multicrystalline
20 (4 x 5 watt)
Microprocessor controlled

Power Supply

Battery Type
Battery Capacity (Ah)
Nominal Voltage (V)

Gel SLA
24
12

Physical Characteristics

Body Material
Lens Material
Lens Diameter (mm/inches)

7-stage powder-coated aluminium chassis with UV-stabilised rubber corners & gaskets
LEXAN® Polycarbonate - UV-stabilised
98 / 3 7/8

Mounting
Height (mm/inches)
Width (mm/inches)
Mass (kg/lbs)
Product Life Expectancy

Single LED Optic
3 & 4 hole 200mm bolt pattern
528 / 20 3/4
233 / 9 1/5
13.9 / 30 1/2
Up to 12 years

Certifications

CE
IALA
Quality Assurance
Waterproof

EN61000-6-3:1997. EN61000-6-1:1997
Signal colours compliant to IALA E-200-1
ISO9001:2008
IP68

Intellectual Property

Trademarks

Signal colours compliant to IALA E-200-1
SEALITE® is a registered trademark of Sealite Pty Ltd
3 years

Warranty *

Options Available

- 50mm pole mount adapter plate
- IR Programmer
- GSM Monitoring & Control System*
- External ON/OFF Switch
- External Battery Charging Port
- GPS Synchronisation: enable/disable
- 5° Lens
- Higher current setting available for high sunlight regions

LED
Red, Green, White, Yellow, Blue
Red - 121 Green - 88 White - 156 Yellow - 95

AT @ 0.74: 3-5+
AT @ 0.85: 3.5-6.3+
360
>7
Up to 256 IALA recommended (user adjustable)
Multiple intensity settings
>100,000

Refer to Sealite Power Calculator
Integrated
12
>110 (14 hour darkness, 12.5% duty cycle)
-40 to 80°C

Multicrystalline
24 (4 x 6 watt)
Microprocessor controlled

Gel SLA
24
12

7-stage powder-coated aluminium chassis with UV-stabilised rubber corners & gaskets
LEXAN® Polycarbonate - UV-stabilised
98 / 3 7/8

Single LED Optic
3 & 4 hole 200mm bolt pattern
590 / 23 1/4
233 / 9 1/5
14.6 / 32 1/4
Up to 12 years

EN61000-6-3:1997. EN61000-6-1:1997
Signal colours compliant to IALA E-200-1
ISO9001:2008
IP68

Signal colours compliant to IALA E-200-1
SEALITE® is a registered trademark of Sealite Pty Ltd
3 years

- 50mm pole mount adapter plate
- IR Programmer
- GSM Monitoring & Control System*
- External ON/OFF Switch
- External Battery Charging Port
- GPS Synchronisation: enable/disable
- 5° Lens
- Higher current setting available for high sunlight regions



* Specifications subject to change or variation without notice
* Subject to standard terms and conditions
† Intensity setting subject to solar availability
Contact Sealite for solar sizing information to ensure suitability in your region

The Sealite SL23 & SL23.5 LED Lanterns have a 3-4 mile range and represent traditional values meeting new-age technology.

Using 20 ultra-high intensity LEDs as a light-source, the large 7AH battery and LED flasher unit is encased in tough, waterproof housing.

The SL23 model has a single 12watt solar module and is designed for fixed installations, with low sunlight or heavy duty-cycles. The SL23.5 model has a single 5watt solar module for medium-sunlight installations.

Both models are used extensively throughout the U.K, Europe and Canada.



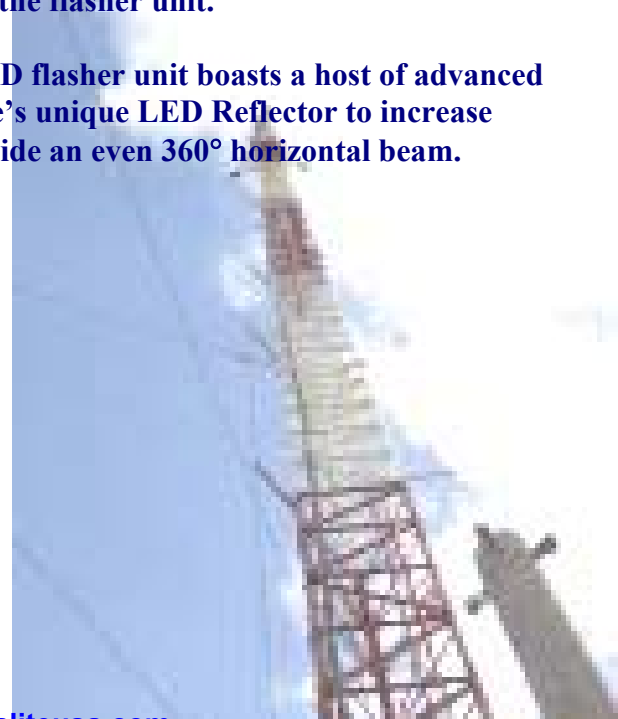
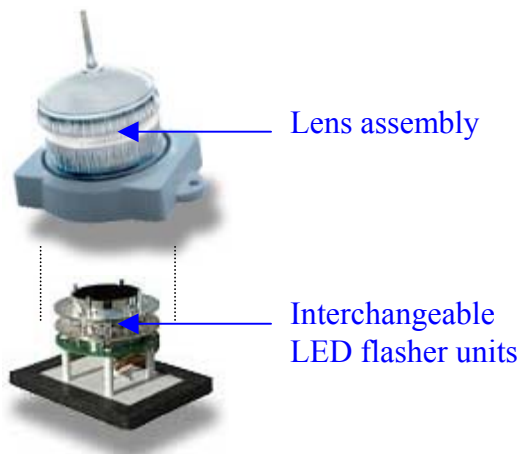
SL23 Lantern

SL23.5 Lantern

Once installed, operation of the Self-Contained Lanterns requires no operator intervention.

During daylight hours the solar module will charge the battery through an advanced switch-mode regulator incorporated into the flasher unit.

The interchangeable LED flasher unit boasts a host of advanced software, and Sealite's unique LED Reflector to increase intensity and provide an even 360° horizontal beam.



SPECIFICATIONS*;

Light Source	20 Ultra high intensity LEDs	Red, Green, White, Yellow, Blue With LED Reflector. International patents pending.
Solar Module	12watt (SL23) 5watt (SL23.5) Dual Module	
Battery	12v 7AH	Sealed Lead Acid
Peak Intensity	> 26cd	3+ mile range
Vertical Divergence	+/- 4.5 degrees	
Autonomy – Darkness	25 days typical	10% duty cycle 12 hour night
Flash characteristics	256	IALA recommended User-adjustable on-site
Mounting	50mm OD pole / Optional base plate	
Lens	Optical-grade UV stabilised polycarbonate	Designed by Sealite for LED use
Body	Aluminium	Subject to marine-grade 7-stage powdercoating
Environmental	Ambient temperature range -30°C to +85°C Humidity 0 to 100%	
Dimensions	SL23: 46cm * 23cm * 66cm (L * W * H) SL23.5: 28cm * 25cm * 44cm (L * W * H)	
Mass	7kg / 6.5kg	
Quality Assurance	ISO9001:2000	
Warranty	3 years**	

* May be subject to change at any time

** Standard conditions apply



Head Office

Sealite Pty Ltd
21 Simcock St
Somerville Vic 3912
Australia
Tel: +61 3 59776128
Fax: +61 3 59776124
Email: info@sealite.com.au
Internet: www.sealite.com.au

USA Customers

Sealite USA
29 Gilford East Drive
Gilford, NH 03249
USA
Tel: (603) 524-6066
Fax: (603) 524-8100
Email: info@sealiteusa.com
Internet: www.sealiteusa.com



SL23 / SL23.5 3 – 4 mile LED Lantern

The Sealite SL23 & SL23.5 LED Lanterns have a 3-4 mile range and represent traditional values meeting new-age technology.

Using 20 ultra-high intensity LEDs as a light-source, the large 7AH battery and LED flasher unit is encased in tough, waterproof housing.

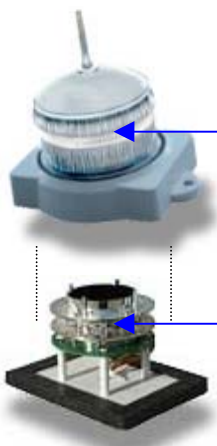
The SL23 model has a single 12watt solar module and is designed for fixed installations, with low sunlight or heavy duty-cycles. The SL23.5 model has a single 5watt solar module for medium-sunlight installations.

Both models are used extensively throughout the U.K, Europe and Canada.



SL23 Lantern

SL23.5 Lantern



Lens assembly

Interchangeable LED flasher units

Once installed, operation of the Self-Contained Lanterns requires no operator intervention.

During daylight hours the solar module will charge the battery through an advanced switch-mode regulator incorporated into the flasher unit.

The interchangeable LED flasher unit boasts a host of advanced software, and Sealite's unique LED Reflector (U.S. Pat. No. 6,667,582) is utilised to increase the intensity and provide an even 360° horizontal beam.





Specifications;

Light Source	20 Ultra high intensity LEDs	Red, Green, White, Yellow, Blue With LED Reflector (U.S. Pat. No. 6,667,582)
Solar Module	12watt (SL23) 5watt (SL23.5) Dual Module	
Battery	12v 7AH	Sealed Lead Acid
Peak Intensity	> 15cd	3+ mile range
Vertical Divergence	+/- 4.5 degrees	
Autonomy – Darkness	25 days typical	10% duty cycle 12 hour night
Flash characteristics	256	IALA recommended User-adjustable on-site
Mounting	50mm OD pole / Optional base plate	
Lens	Optical-grade UV stabilised polycarbonate	Designed by Sealite for LED use
Body	Aluminium	Subject to marine-grade 7-stage powdercoating
Environmental	Ambient temperature range -30°C to +85°C Humidity 0 to 100%	
Dimensions	SL23: 46cm * 23cm * 66cm (L * W * H) SL23.5: 28cm * 25cm * 44cm (L * W * H)	
Mass	7kg / 6.5kg	
Quality Assurance	ISO9001:2000	
Warranty	3 years**	

* May be subject to change at any time

** Standard conditions apply

